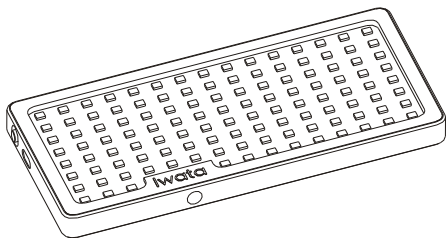


Iwata

Quick Start Guide of Iwata Genius Light



Model : GL-01

Thank you for purchasing Iwata Genius Light!
Please read this Quick Start Guide carefully before
using this product and save it after reading.

Specifications

Color Temperature Range: 3000K~5500K (± 100K)

Color Rendering: Ra≥96, TLCI≥98

Built-in Lithium Battery Capacity: 2300mAh

LED Bulbs Quantity: 117

Maximum Power: 8W

Input Voltage and Current: 5V/1A (normal charge)

5V/2.1A (quick charge or continuously working)

Beam Angle: 120°

Illuminance (at a distance of 0.5 meter):

1000lx@5500K, 850lx@3000K

Battery Life: about 1 hour at maximum power

about 20 hours at 5% level of power

Dimensions: 130mm x 65mm x 9.3mm (3.9" x 1.95" x 0.28")

Weight: 135g

Display Screen: OLED screen

Bottom Screw Hole: 1/4"

Allowable Temperature Range:

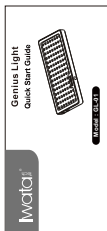
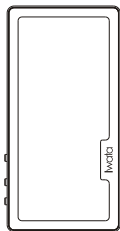
to work between -5° and 35° C

to be charged between 0° and 35° C

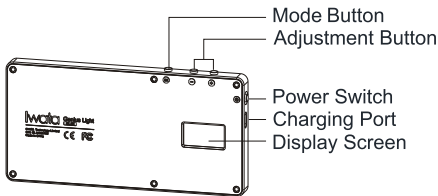
to be stored between -20° and 60° C

Package Contents

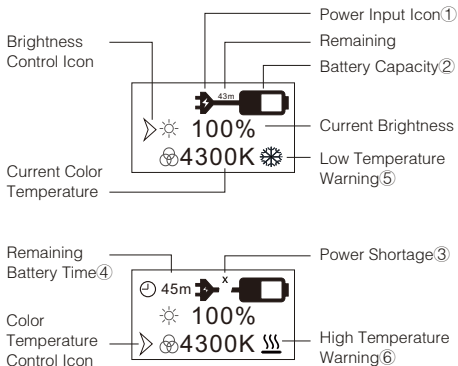
Genius Light, USB Charging Cable, Quick Start Guide.



Layout of GL-01



Icons



- ① The plug icon means the external power source is connected.
- ② This icon shows the estimated remaining charge time of battery with h(hour) and m(minute). The "OK" icon appears when the battery is fully charged.
- ③ **X** icon appears in the display, when Genius Light is working, connected to a 5V/1A charger or a cable of low quality. A 5V/2.1A charger and the original USB charging cable are recommended, if Genius Light has to work for a long time.

- ④ This icon shows the remaining battery time with h(hour) and m(minute).
- ⑤ The low temperature warning icon appears when ambient temperature is below the lowest allowable temperature. Genius Light may not work properly under this circumstance.
- ⑥ The high temperature warning icon appears when ambient temperature is above the highest allowable temperature. If temperature keeps rising, Genius Light will be automatically switched off. To eliminate the high temperature warning icon, please press any button.

Instructions


1. Turing on/off the power

Press and hold the Power Switch Button until the data appear on the display screen/disappear from the display screen.

2. Turning on/off the light

Press the Power Switch Button once, while Genius Light is standby.

3. Brightness and Color Temperature Control

-  to switch to the control of Brightness or Color Temperature
-  Brightness or Color Temperature up
-  Brightness or Color Temperature down

- **Brightness Control (5%–100%)**

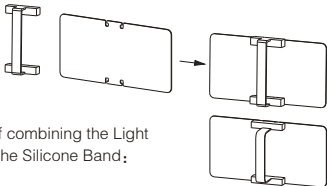
Press the Mode Switch Button until the pointer points at the ☀ area, then use the Brightness Control up/down Button to adjust the brightness. Press the button once to adjust up or down 5% level of brightness.

- **Color Temperature Control (3000K–5500K)**

Press the Mode Switch Button until the pointer points at the 🌙 area, then use the Color Temperature Control up/down Button to adjust the color temperature. Press the button once to increase or decrease 100K level of color temperature.

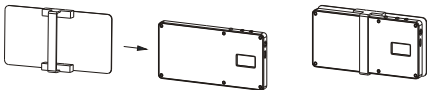
4. Using Light Diffuser (Single purchase)

- Combine the Light Diffuser to the Silicone Band as shown:



Wrong way of combining the Light Diffuser and the Silicone Band:

- Install the Light Diffuser with Silicone Band to GL-01 as shown:



Battery

- When the battery of Genius Light is fully charged, please detach Genius Light from the USB cable.
- Please do not charge the battery, when the ambient temperature is beyond the allowable range, otherwise Genius Light can be damaged or battery life can be shortened.
- The battery may gradually run down and not be switched on properly, if the product is long-term unused. Please recharge the battery in this circumstance and recharge the battery at least once three months.
- If the battery capacity indicator has an error in displaying the actual capacity, please fully discharge and recharge the battery to correct it.
- The rechargeable battery has a limited service life and should only be replaced by the manufacturer. When the performance of battery is obviously decreased after years, please contact the local distributor.

Note

- Do not disassemble or modify this product.
- Do not soak Genius Light in water or put it in fire.
- Please avoid any dash or knock on Genius Light.
- Genius Light's temperature can increase, when it works. Please make room for heat dissipation.
- Avoid exposing Genius Light to dramatic changes in temperature or humidity.

Disposal Information



The symbol on the left indicates that according to local laws and regulations this product and its battery shall not be disposed as household waste. When this product reaches its end of life, take it to a collection point designated by local authorities. The separate collection and recycling of your product and/or its battery at the time of disposal will help conserve natural resources and prevent potential negative consequences for the environment and human health.